

## FEI Driving European Championship for Youth - Flyinge (SWE) 23-28 July 2024

<i>MARATHON TIMETABLE</i>			<b>CHILDREN</b>				
Obstacles:12356 Gates: ABCD	length (m)	pace	speed in km/h	Minimum time	Time allowed	Time Limit	Obligatory gates
10 min before Warm up: Horse Inspection in Harness							
<b>Warm Up</b>				00:28:00	00:30:00	00:36:00	
Halt					00:05:00		
Neutral Zone	400				00:05:00		
Training Obstacle					00:02:00		
Section B	4.800	Acc. To rules	13	00:19:10	00:22:10	00:44:20	1-2-3-5
Cool Down				00:10:00	00:15:00		

## FEI Driving European Championship for Youth - Flyinge (SWE) 23-28 July 2024

<i>MARATHON TIMETABLE</i>			<b>PONY – JUNIOR, U25</b>				
Obstacles:123456 Gates: ABCDEF	length (m)	pace	speed in km/h	Minimum time	Time allowed	Time Limit	Obligatory gates
10 min before Warm up: Horse Inspection in Harness							
<b>Warm Up</b>				00:28:00	00:30:00	00:36:00	
Halt					00:05:00		
Neutral Zone	400				00:05:00		
Training Obstacle					00:02:00		
Section B	6.300	Acc. To rules	13	00:26:05	00:29:05	00:58:10	1-6
Cool Down				00:10:00	00:15:00		

## FEI Driving European Championship for Youth - Flyinge (SWE) 23-28 July 2024

<i>MARATHON TIMETABLE</i>			<b>HORSE – U25</b>				
Obstacles:123456 Gates: ABCDEF	length (m)	pace	speed in km/h	Minimum time	Time allowed	Time Limit	Obligatory gates
10 min before Warm up: Horse Inspection in Harness							
<b>Warm Up</b>				00:28:00	00:30:00	00:36:00	
Halt					00:05:00		
Neutral Zone	400				00:05:00		
Training Obstacle					00:02:00		
Section B	6.300	Acc. To rules	14	00:24:00	00:27:00	00:54:00	1-6
Cool Down				00:10:00	00:15:00		

Children  
 B Section 4800 m  
 Obstacles 1-2-3-5-6  
 Gates 1-2-3-5  
 Cooldown 800 m

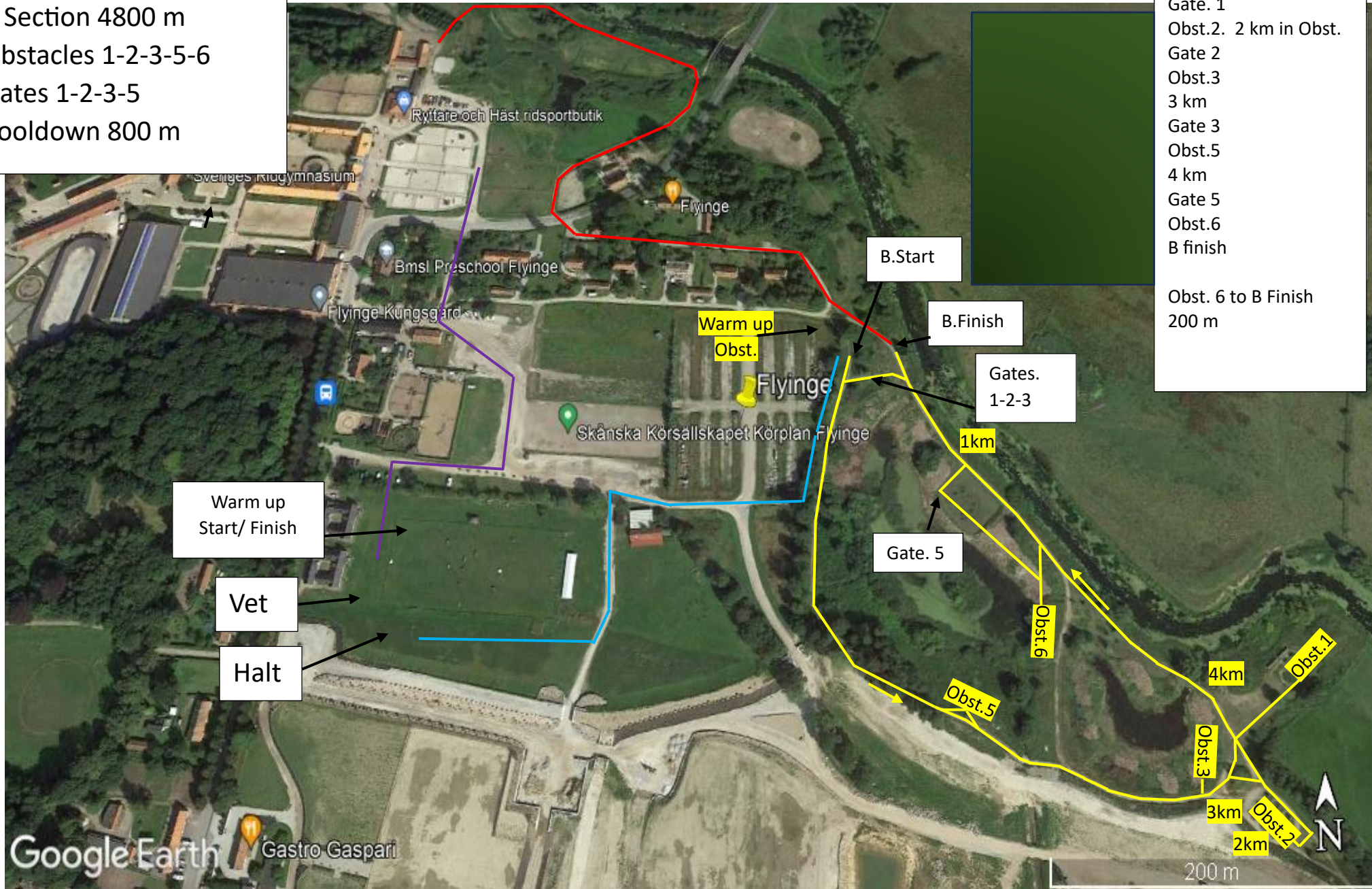
To Warm up

To B Start

Cooldown

B Start  
 Obst.1  
 1 km  
 Gate. 1  
 Obst.2. 2 km in Obst.  
 Gate 2  
 Obst.3  
 3 km  
 Gate 3  
 Obst.5  
 4 km  
 Gate 5  
 Obst.6  
 B finish

Obst. 6 to B Finish  
 200 m



Warm up  
 Start/ Finish

Vet

Halt

B.Start

B.Finish

Gates.  
 1-2-3

1km

Gate. 5

Obst.6

Obst.5

4km

Obst.1

Obst.3

3km

Obst.2

2km

Google Earth

Gastro Gaspari

200 m



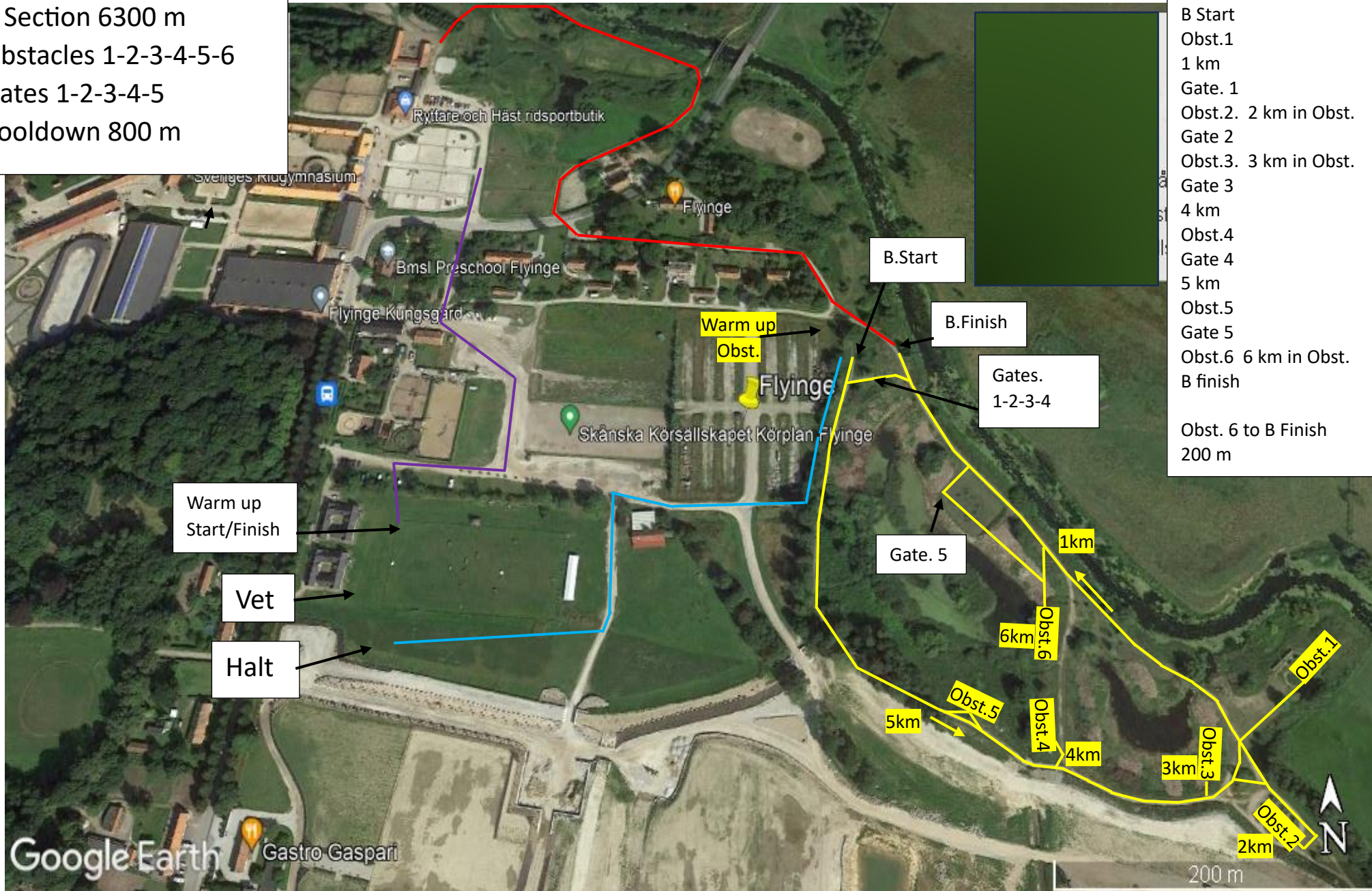
Junior and U 25  
 B Section 6300 m  
 Obstacles 1-2-3-4-5-6  
 Gates 1-2-3-4-5  
 Cooldown 800 m

To Warm up

To B Start

Cooldown

B Start  
 Obst.1  
 1 km  
 Gate. 1  
 Obst.2. 2 km in Obst.  
 Gate 2  
 Obst.3. 3 km in Obst.  
 Gate 3  
 4 km  
 Obst.4  
 Gate 4  
 5 km  
 Obst.5  
 Gate 5  
 Obst.6 6 km in Obst.  
 B finish  
 Obst. 6 to B Finish  
 200 m



Warm up  
 Start/Finish

Vet

Halt

B.Start

B.Finish

Gates.  
 1-2-3-4

Gate. 5

1km

Obst.6

6km

Obst.5

5km

Obst.4

4km

Obst.3

3km

Obst.2

2km

Obst.1

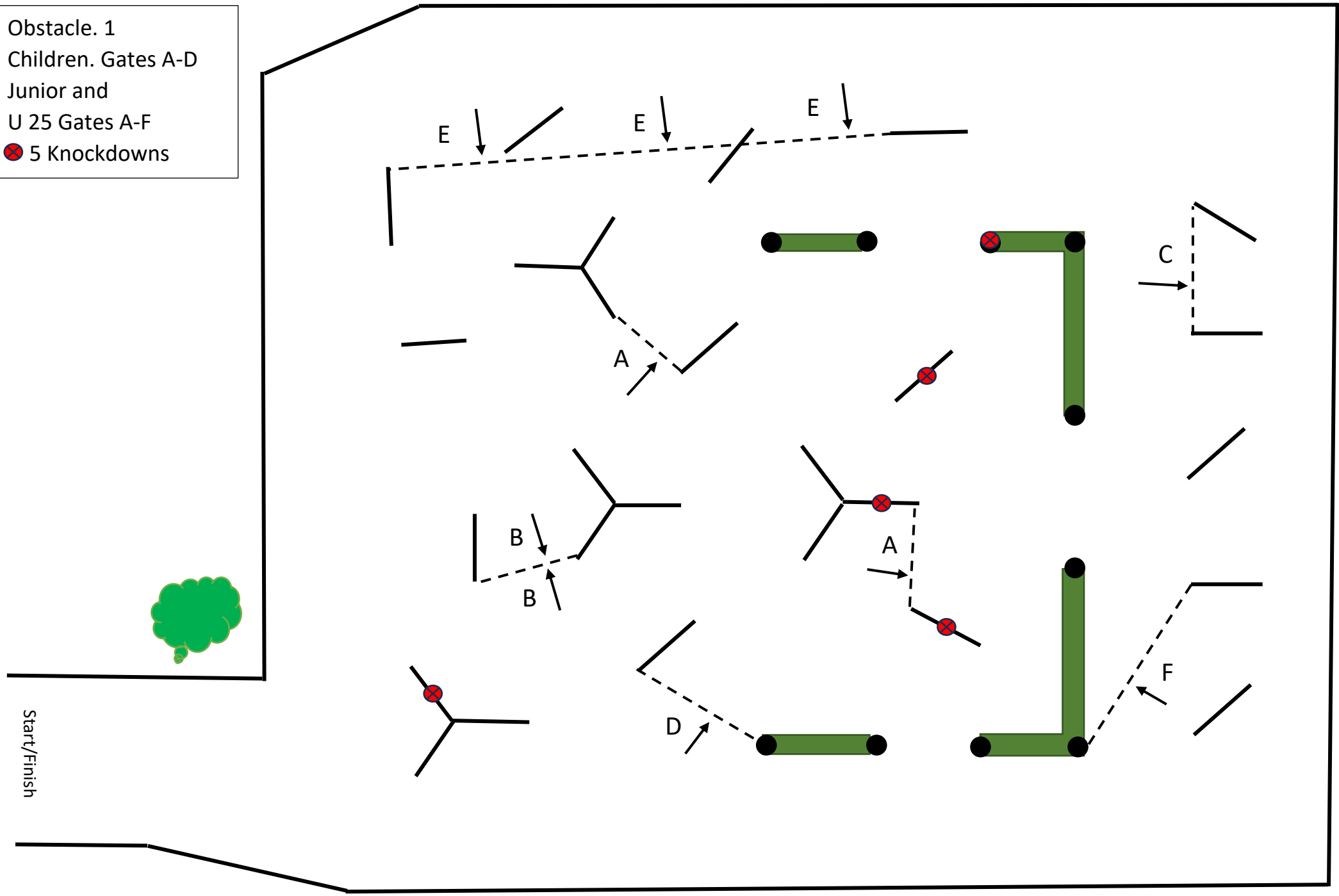
Google Earth

Gastro Gaspari

200 m

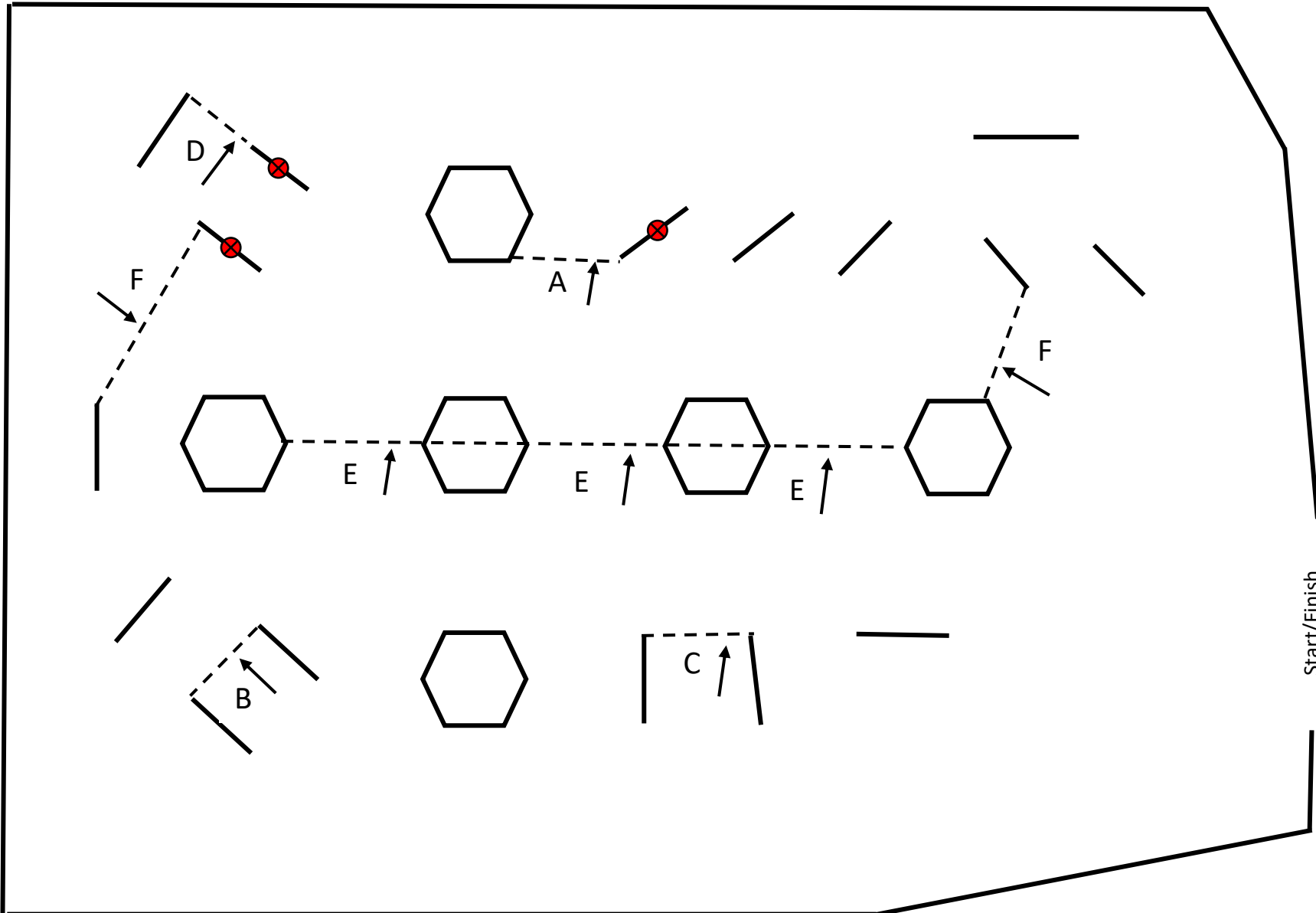


Obstacle. 1  
Children. Gates A-D  
Junior and  
U 25 Gates A-F  
⊗ 5 Knockdowns



Start/Finish

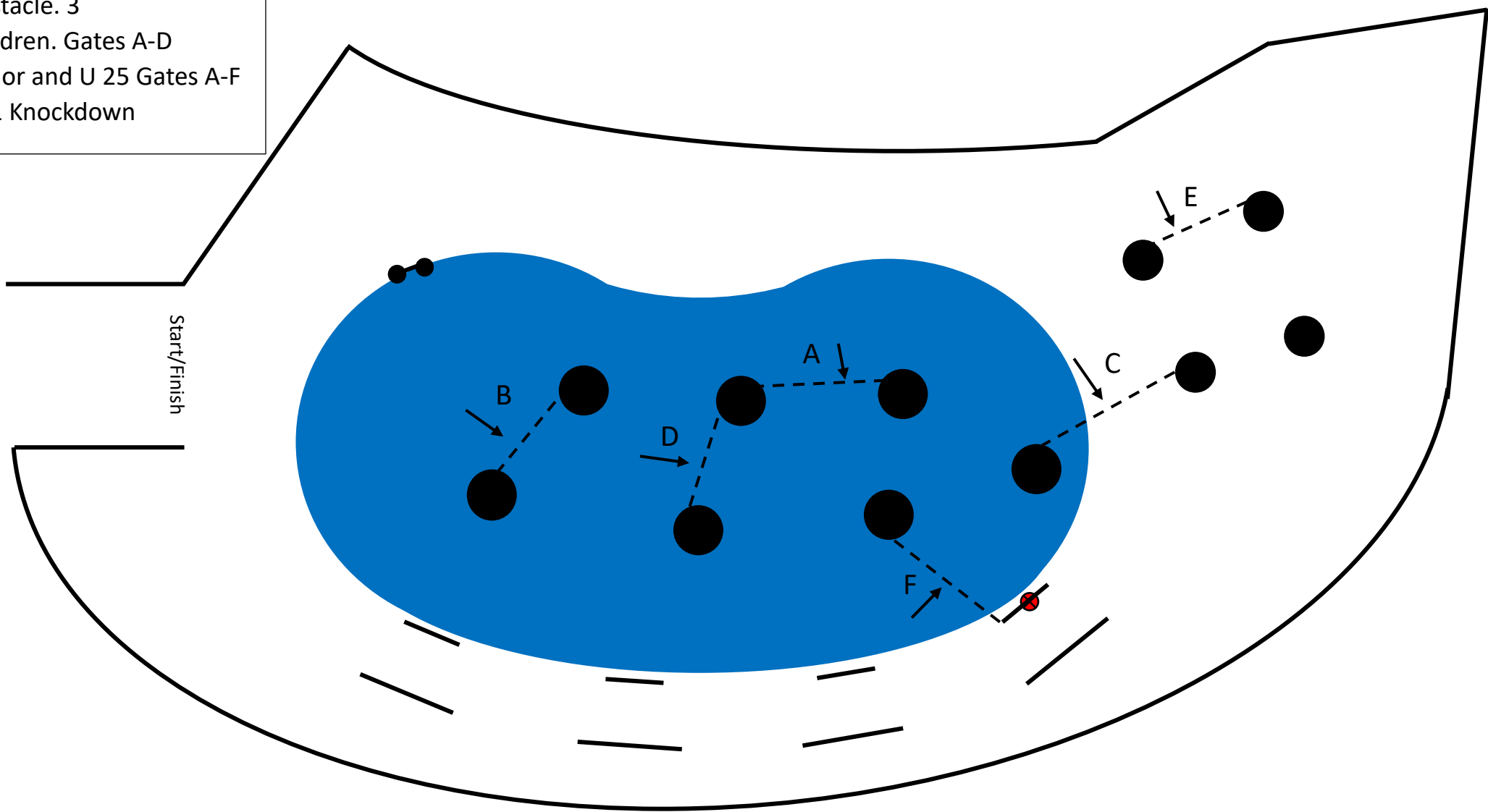
Obstacle. 2  
Children. Gates A-D  
Junior and U 25. Gates A-F  
⊗ 3 Knockdowns



Start/Finish

CD. Jeroen Houterman  
CD. Kim Andreasen

Obstacle. 3  
Children. Gates A-D  
Junior and U 25 Gates A-F  
⊗ 1 Knockdown



CD. Jeroen houterman  
CD. Kim Andreasen

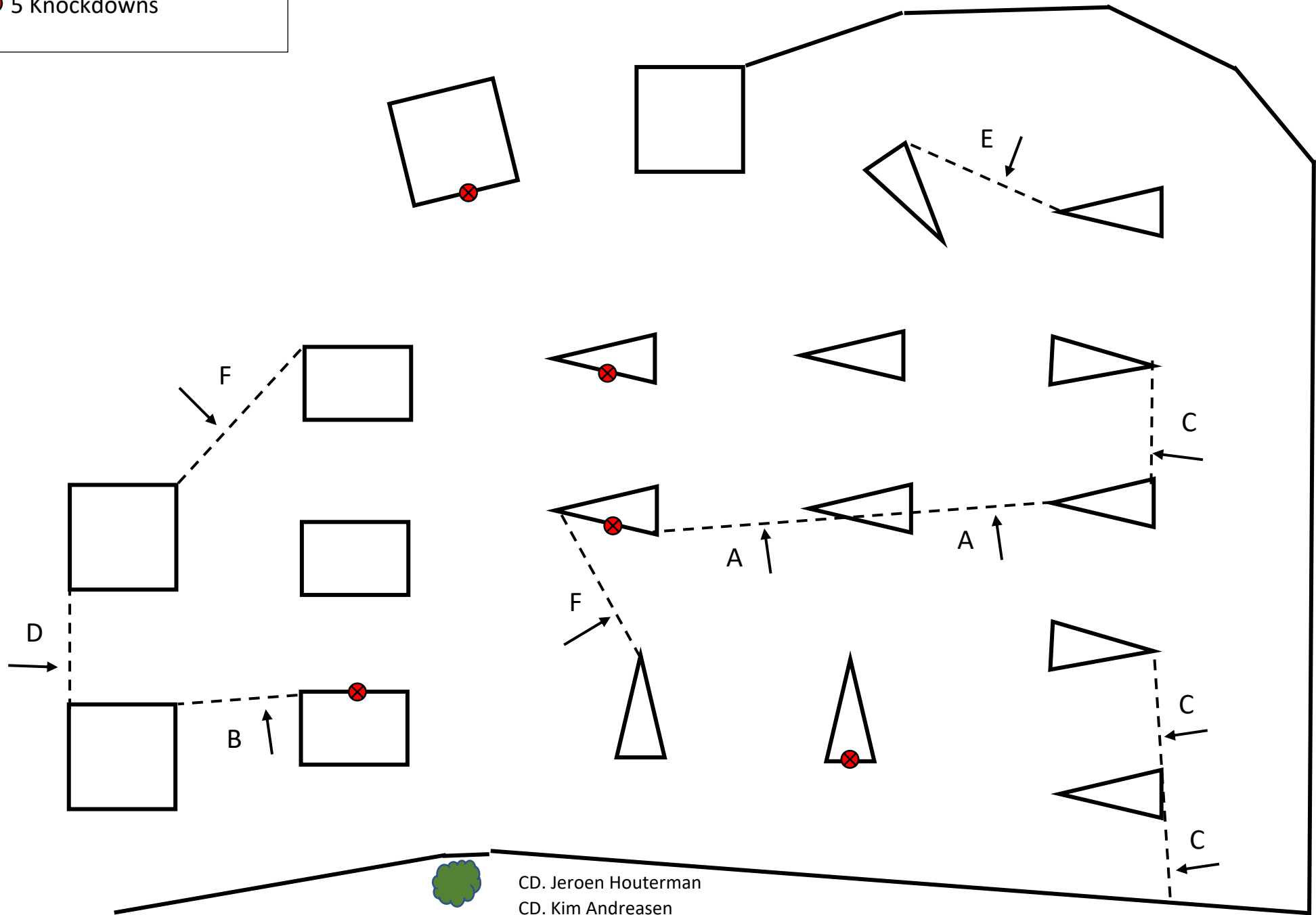
Obstacle. 4

Junior and U 25.

Gates A-F

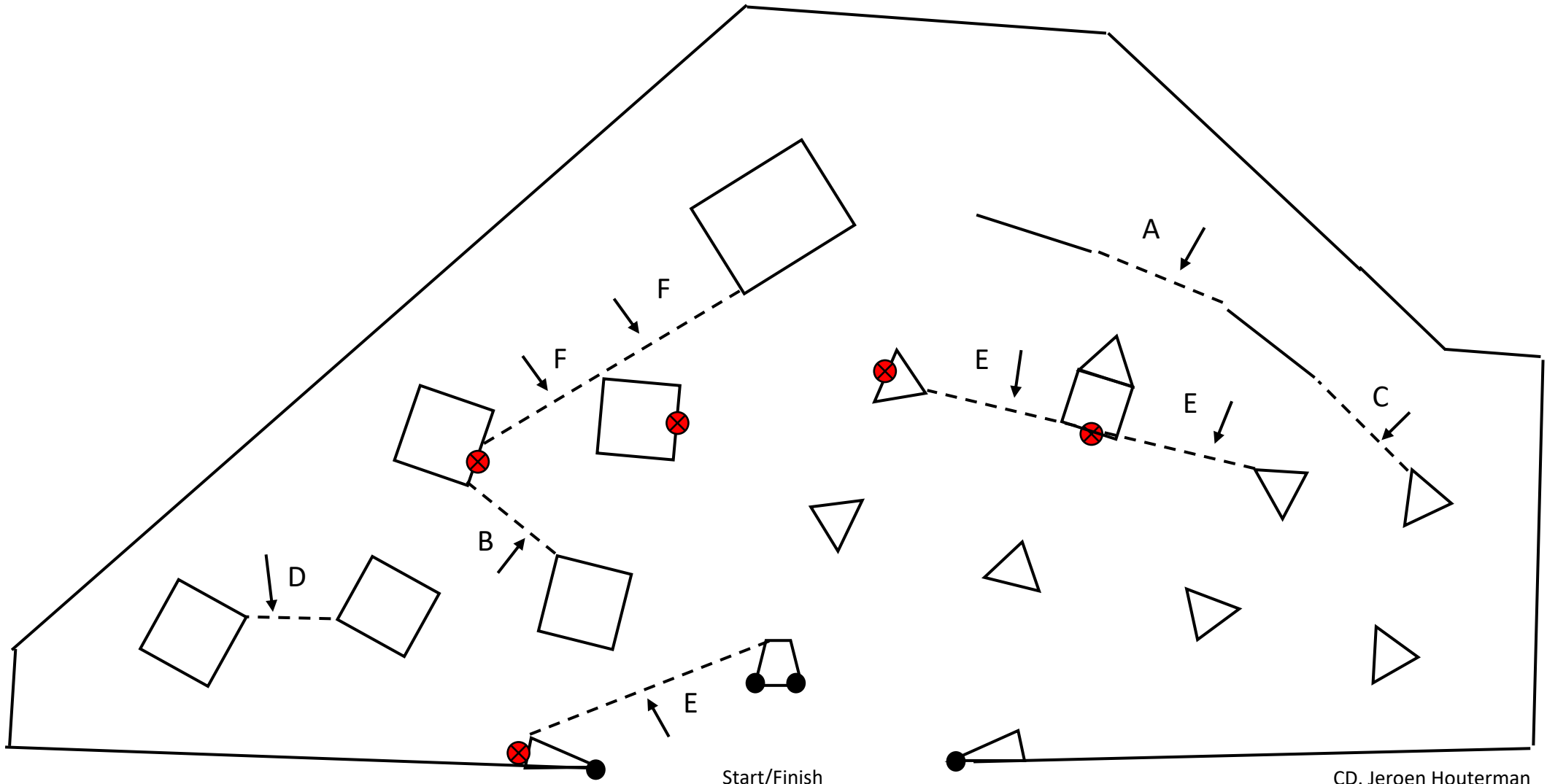
⊗ 5 Knockdowns

Start/Finish



CD. Jeroen Houterman  
CD. Kim Andreasen

Obstacle. 5  
Children Gates A-D  
Junior and U 25. Gates A-F  
⊗ 5 Knockdowns

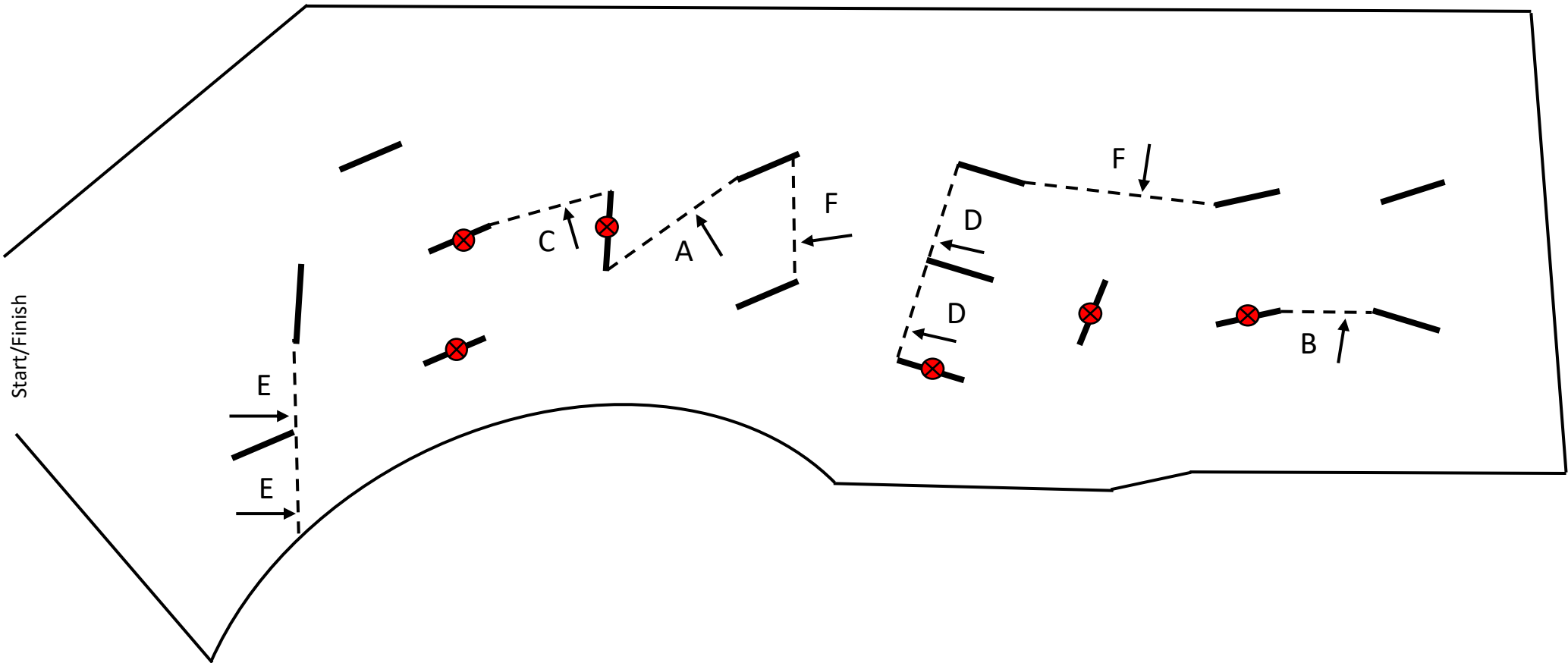


Start/Finish

CD. Jeroen Houterman  
CD. Kim Andreasen



Obstacle.6  
Children. Gates A-D  
Junior and U25. Gates A-F  
⊗ 6 Knockdowns



CD. Jeroen Houterman  
CD. Kim Andreasen